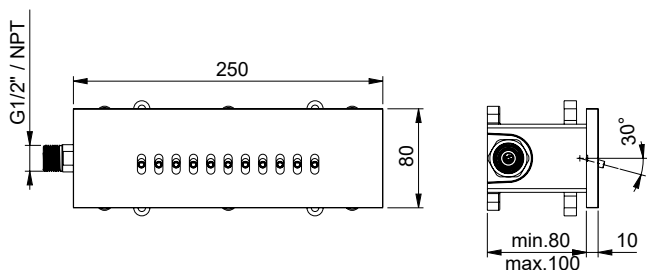


# D-JPW

Jets

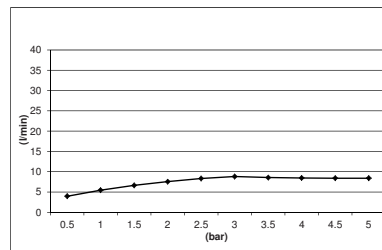


## DESCRIPCIÓN

Body jet rectangular tipo wave de 250x80 mm a pared.

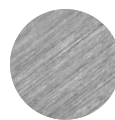
— Fabricado en acero inoxidable AISI316 y AISI 304

## CAUDALES



## ACABADOS DISPONIBLES

### Acero inoxidable AISI 316



Acero inox.  
cepillado



Oro  
cepillado



Cobre  
cepillado



Gunmetal

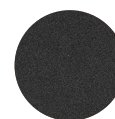
### Acero inoxidable AISI 304



Acero inox.  
brillante



Blanco  
mate



Negro  
mate



Oro  
brillante

# D-JPW

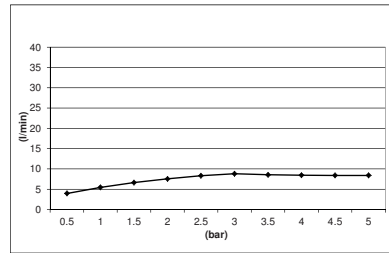
Jets



## DESCRIPTION

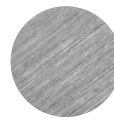
Wave type rectangular body jet of 250x80 mm.  
— Made of stainless steel AISI 316 and AISI 304.

## FLOW RATES



## FINISHES AVAILABLE

### Stainless steel AISI 316



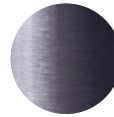
Brushed stainless steel



Brushed gold



Brushed copper



Gunmetal

### Stainless steel AISI 304



Polished stainless steel



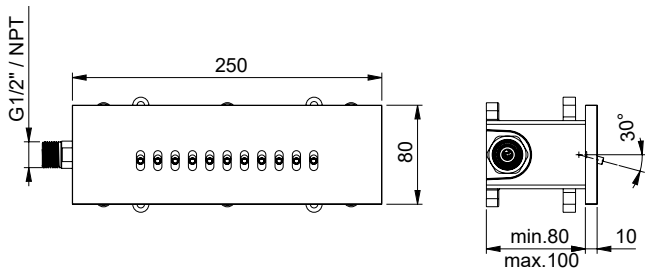
Matt white



Matt black

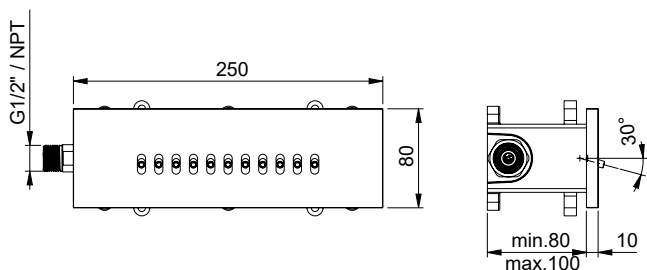


Polished gold



# D-JPW

Jets

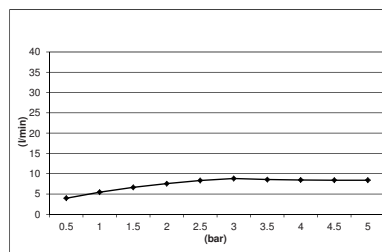


## DESCRIZIONE

Body jet rettangolare di 250x80 mm con effetto onda.

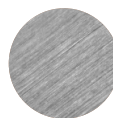
— Fabbricato in acciaio inossidabile AISI 316 and AISI 304.

## PORTATE



## FINITURA DISPONIBILI

### Acciaio inossidabile AISI 316



Acciaio  
inoss.  
spazzolato



Oro  
spazzolato



Rame  
spazzolato



Gunmetal

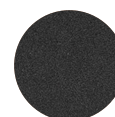
### Acciaio inossidabile AISI 304



Acciaio  
inoss.  
lucido



Bianco  
opaco



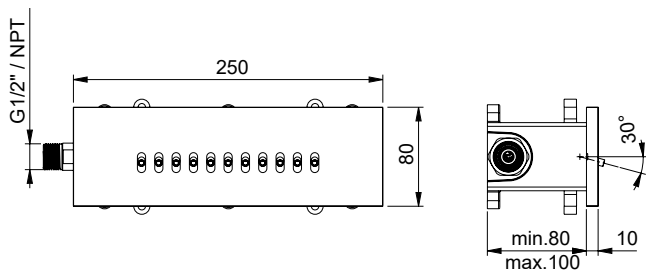
Nero  
opaco



Oro  
lucido

# D-JPW

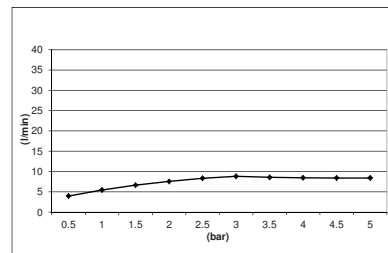
Jets



## DESCRIPTION

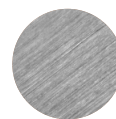
Jet de corps rectangulaire de 250x80 mm avec effet de vague au mur.  
 — Fabriquée en acier inoxydable AISI 316 and AISI304

## DÉBITS



## FINITIONS DISPONIBLES

### Acier inoxydable AISI 316



Acier  
inox.  
brossé



Or  
brossé



Cuivre  
brossé



Gunmetal

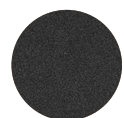
### Acier inoxydable AISI 304



Acier  
inox.  
brillant



Blanc  
mat



Noir  
mat



Or  
brillant