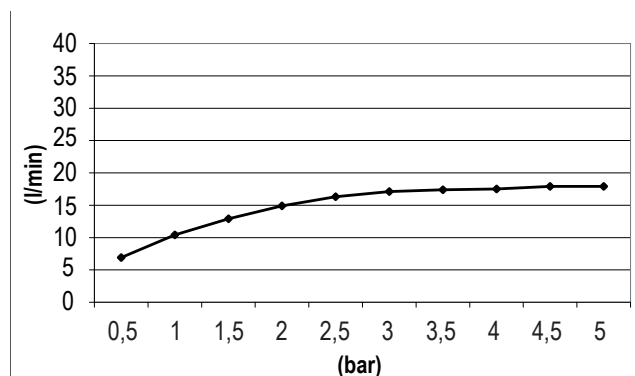


DESCRIPCIÓN

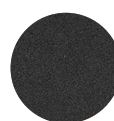
Body jet rectangular tipo cascada de 300x145 mm a pared.

— Fabricado en acero inoxidable AISI304.

CAUDAL



ACABADOS DISPONIBLES



Negro
mate



Blanco
mate



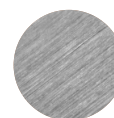
Oro
brillante



Oro
cepillado



Acero
inox.
brillante



Acero
inox.
cepillado



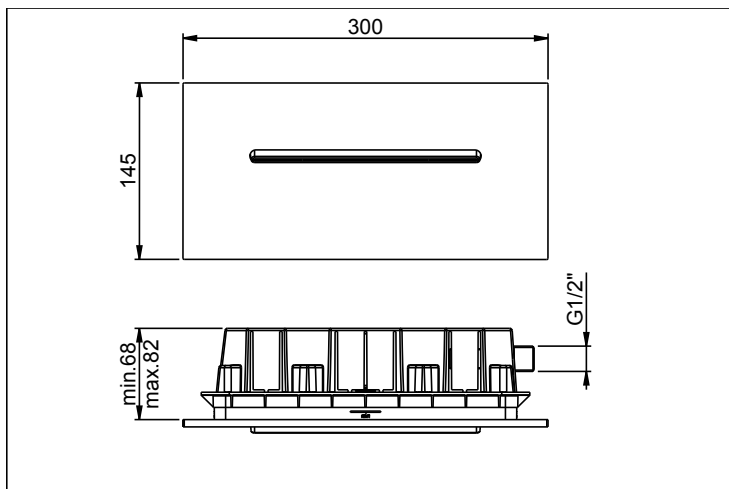
Gunmetal



Cobre
cepillado

D-WF

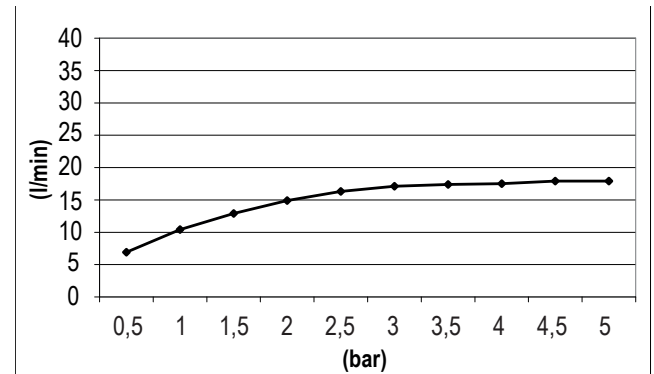
Jets



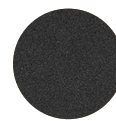
DESCRIPTION

Waterfall type rectangular body jet of 300x145 mm.
— Made of stainless steel AISI304.

FLOW RATE



FINISHES AVAILABLE



Matt black



Matt white



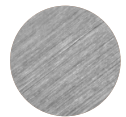
Polished gold



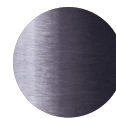
Brushed gold



Polished stainless steel



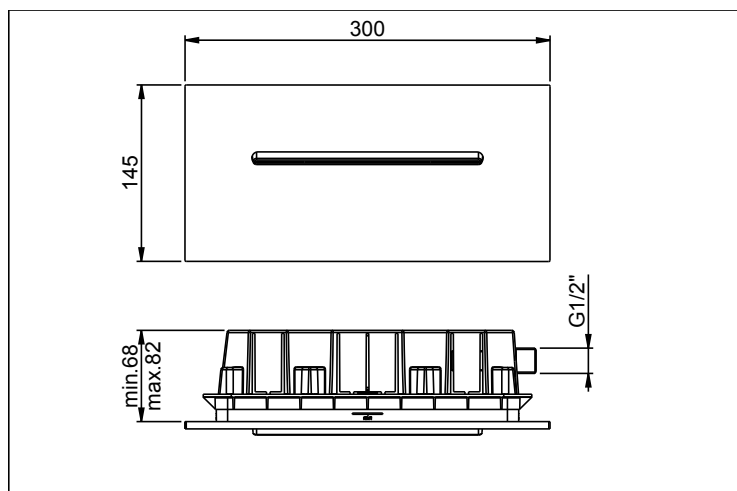
Brushed stainless steel



Gunmetal



Brushed copper

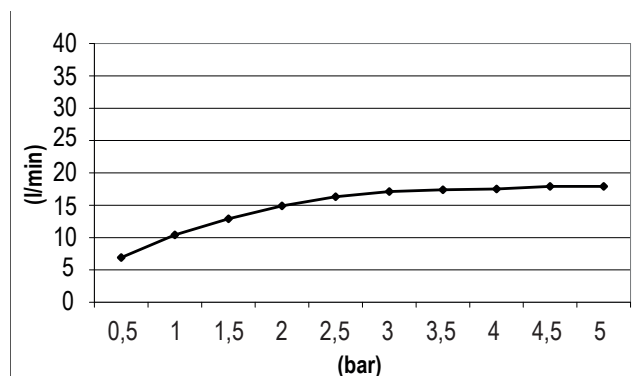


DESCRIZIONE

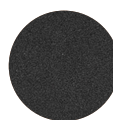
Body jet rettangolare di 250x80 mm con effetto cascata.

— Fabbricato in acciaio inossidabile AISI304.

PORTATE



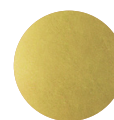
FINITURA DISPONIBILI



Nero
opaco



Bianco
opaco



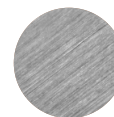
Oro
lucido



Oro
spazzolato



Acciaio
inoss.
lucido



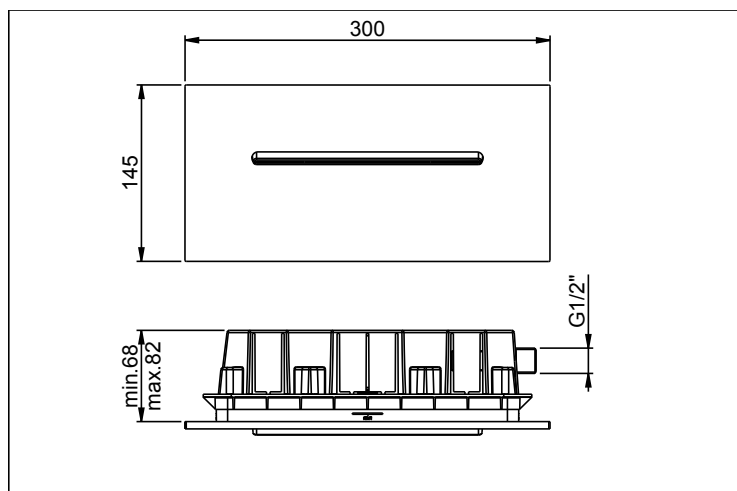
Acciaio
inoss.
spazzolato



Gunmetal

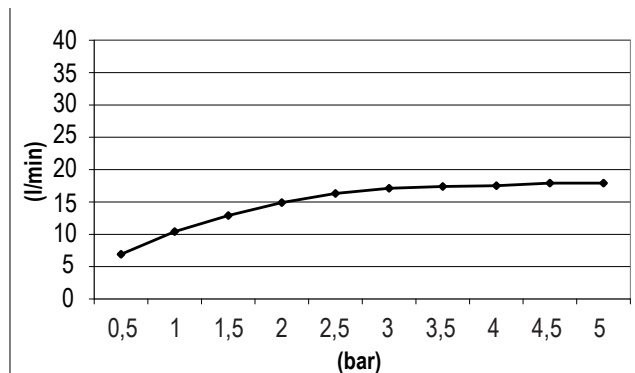
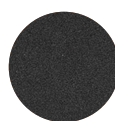
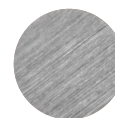


Rame
spazzolato

**DESCRIPTION**

Jet de corps rectangulaire de 250x80 mm avec effet de cascade au mur.

— Fabriquée en acier inoxydable AISI304.

DÉBITS**FINITIONS DISPONIBLES**Noir
matBlanc
matOr
brillantOr
brosséAcier
inox.
brillantAcier
inox.
brossé

Gunmetal

Cuivre
brossé