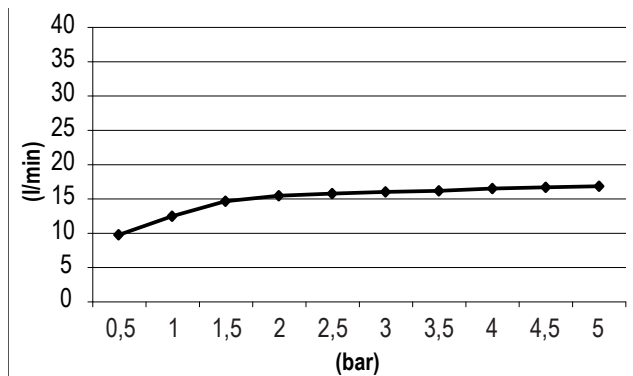


## DESCRIPCIÓN

Body jet rectangular tipo cascada de 346x80 mm a pared.

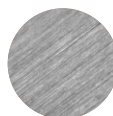
— Fabricado en acero inoxidable AISI 316 y AISI 304.

## CAUDAL



## ACABADOS DISPONIBLES

### Acero inoxidable AISI 316



Acero inox.  
cepillado



Oro  
cepillado



Cobre  
cepillado



Gunmetal

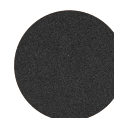
### Acero inoxidable AISI 304



Acero inox.  
brillante



Blanco  
mate



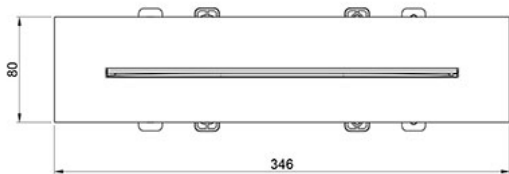
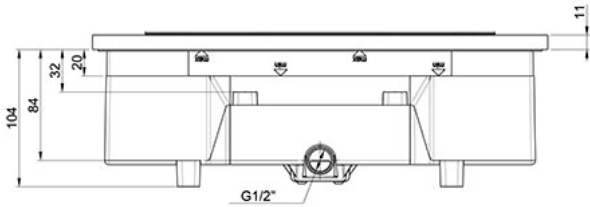
Negro  
mate



Oro  
brillante

# D-WFXL

Jets

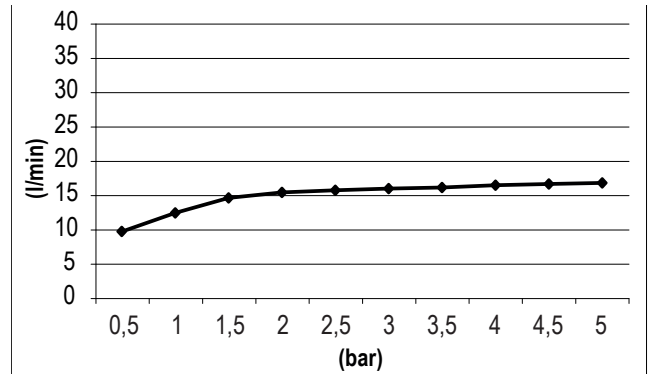


## DESCRIPTION

Waterfall type rectangular bodyjet of 346x80 mm.

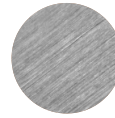
— Made of stainless steel AISI 316 and AISI 304

## FLOW RATE



## FINISHES AVAILABLE

### Stainless steel AISI 316



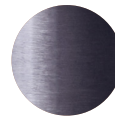
Brushed stainless steel



Brushed gold



Brushed copper



Gunmetal

### Stainless steel AISI 304



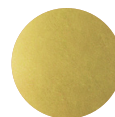
Polished stainless steel



Matt white



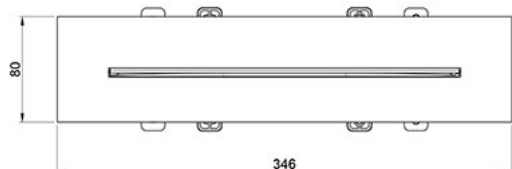
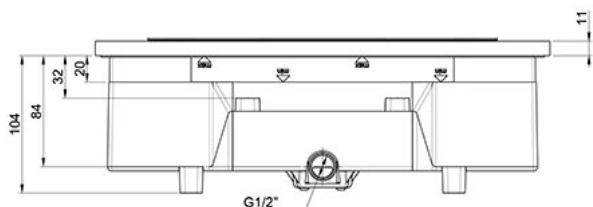
Matt black



Polished gold

# D-WFXL

Jets

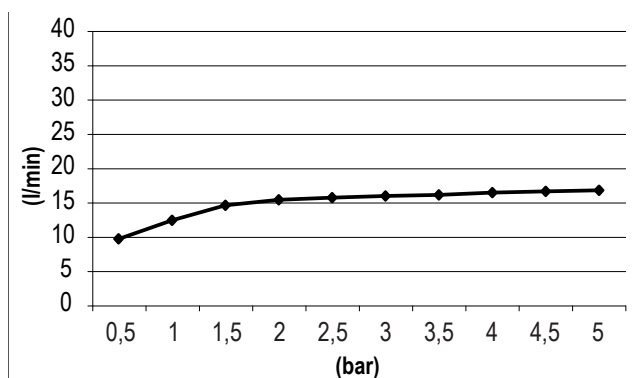


## DESCRIZIONE

Body jet rettangolare di 346x80 mm con effetto cascata a muro.

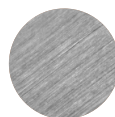
— Fabbricato in acciaio inossidabile AISI 316 e AISI 304.

## PORTATE



## FINITURA DISPONIBILI

### Acciaio inossidabile AISI 316



Acciaio  
inoss.  
spazzolato



Oro  
spazzolato



Rame  
spazzolato



Gunmetal

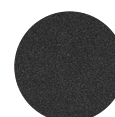
### Acciaio inossidabile AISI 304



Acciaio  
inoss.  
lucido



Bianco  
opaco



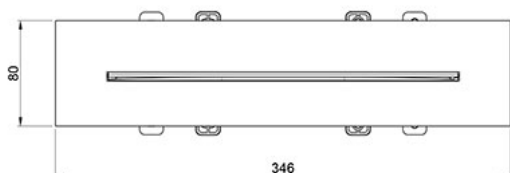
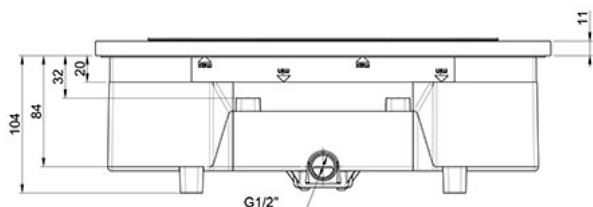
Nero  
opaco



Oro  
lucido

# D-WFXL

Jets

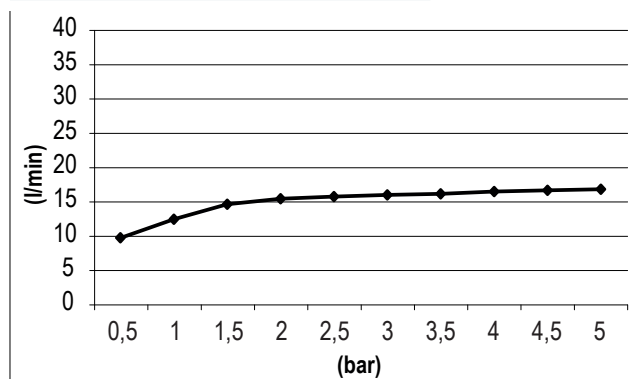


## DESCRIPTION

Jet de corps rectangulaire de 250x80 mm avec effet de cascade au mur.

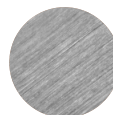
— Fabriquée en acier inoxydable AISI 316 et AISI 304.

## DÉBITS



## FINITIONS DISPONIBLES

### Acier inoxydable AISI 316



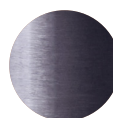
Acier  
inox.  
brossé



Or  
brossé



Cuivre  
brossé



Gunmetal

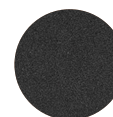
### Acier inoxydable AISI 304



Acier  
inox.  
brillant



Blanc  
mat



Noir  
mat



Or  
brillant