

# DEXTER 10A

Duchas de exterior



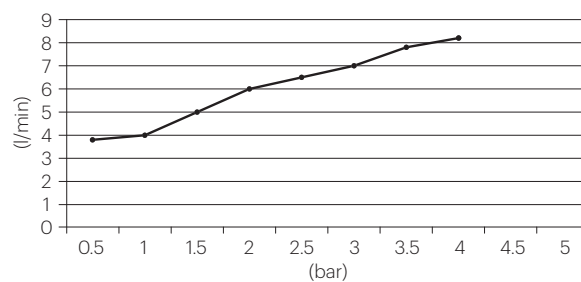
## DESCRIPCIÓN

Ducha para exterior de 2.460 mm. y Ø50 mm. con monomando.  
Para agua fría y caliente.

Fabricado en acero inox AISI 316L.

## CAUDAL

BREEAM™



## ESPECIFICACIONES

Conexión de agua de 1/2".

## ACABADOS DISPONIBLES



Acero inox.  
brillante



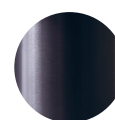
Acero inox.  
cepillado



Negro  
mate



Blanco  
mate



Gunmetal



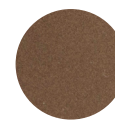
Cobre  
cepillado



Oro  
brillante



Oro  
cepillado



Bronce  
esmaltado



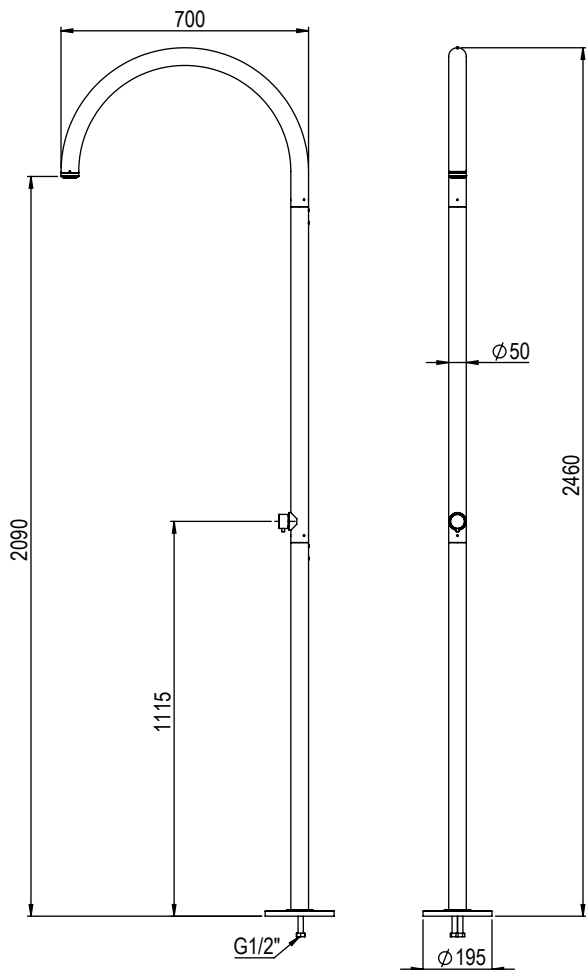
Oro  
esmaltado



Cobre rosa  
esmaltado



Color  
RAL



# DEXTER 10A

Outdoor showers



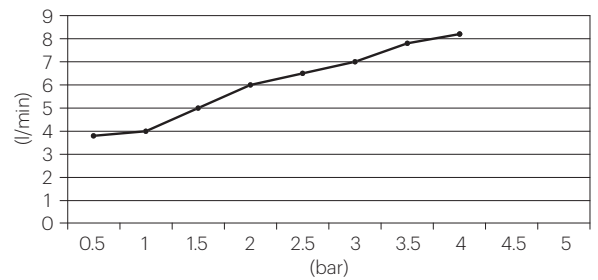
## DESCRIPTION

Outdoor shower 2.460 mm. and Ø50 mm.  
with single lever mixer.  
Cold and hot water.

Made of AISI 316L stainless steel.

## FLOW RATE

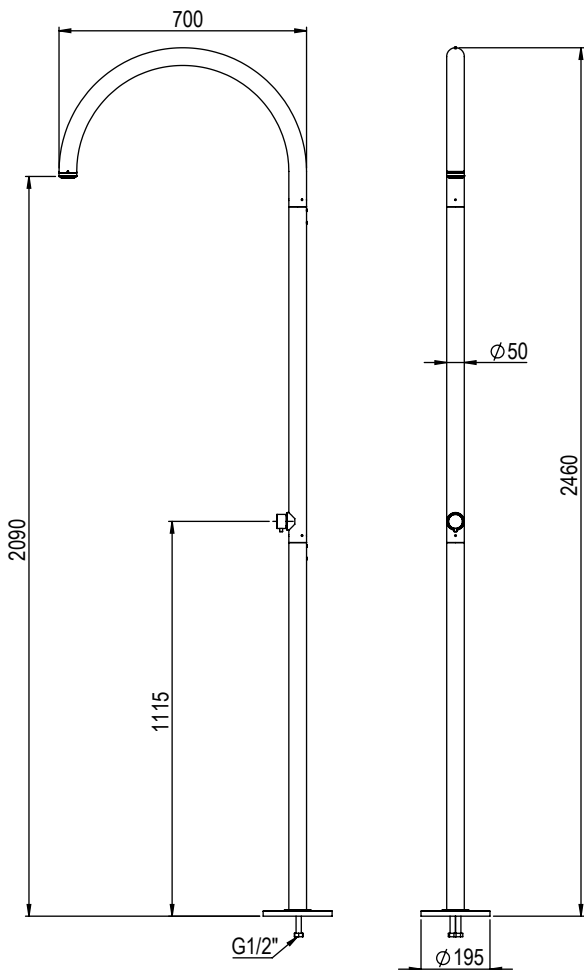
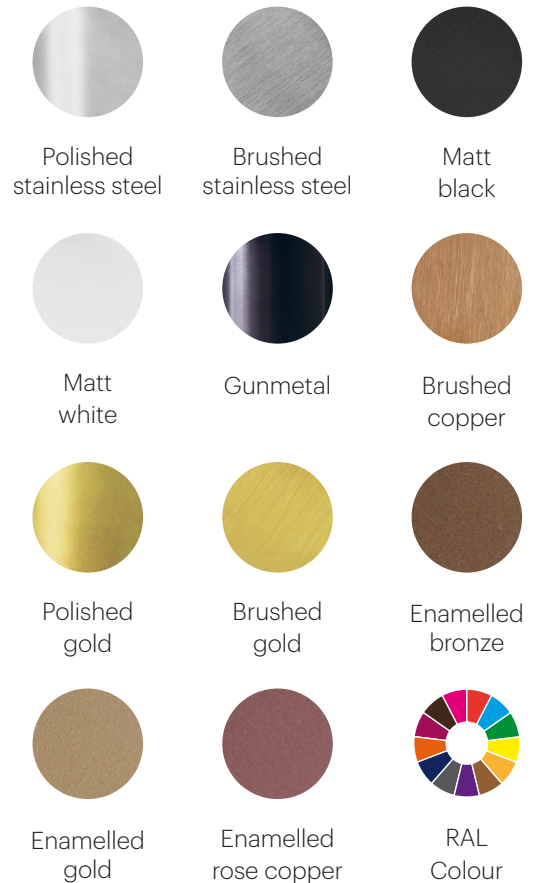
BREEAM\*



## SPECIFICATIONS

1/2" water connection.

## AVAILABLE FINISHES



# DEXTER 10A

Douches extérieures



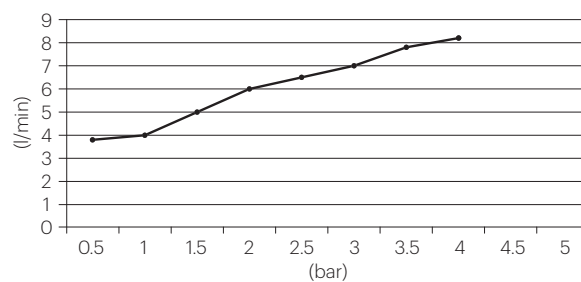
## DESCRIPTION

Douche extérieure 2.460 mm. et Ø50 mm.  
avec monocommande.  
Eau froide et chaude.

Fabriqué en acier inoxydable AISI 316L.

## DÉBIT

BREEAM™



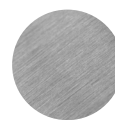
## SPECIFICATIONS

Raccordement d'eau 1/2.

## FINITIONS DISPONIBLES



Acier inox.  
brillant



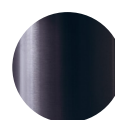
Acier inox.  
brossé



Noir  
mat



Blanc  
mat



Canon  
fusil



Cuivre  
brossé



Or  
brillant



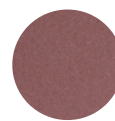
Or  
brossé



Bronze  
émaillé



Or  
émaillé



Cuivre rose  
émaillé



Couleur  
RAL

