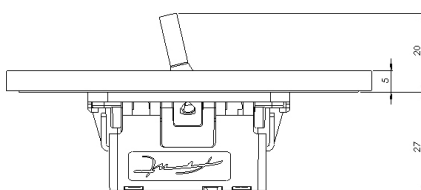
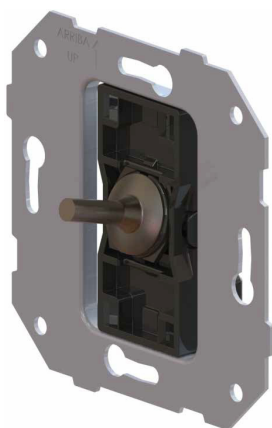


IC3040

Cruzamiento



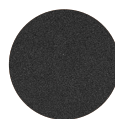
CARACTERÍSTICAS

- Material parte principal: Poliamida 66 GF15 libre de halógenos
- Material palanca: Latón
- Material placa: Aluminio y latón
- Temperatura ambiente de funcionamiento: -5 a 40°C
- Temperatura ambiente de almacenamiento: -10 a 50°C
- Tipo de embornamiento: Borne con tornillo
- Sección de cable admitido: 1,5 a 4mm² rígido y flexible

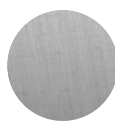
ESPECIFICACIONES TÉCNICAS

- Tensión asignada: 250 V ~
- Corriente asignada: 16 AX
- Modo de mando: Palanca
- Modo de instalación: Empotrado
- Grado de protección: IP20
- Construido según norma UNE-EN 60.669-1:2018
- Montaje en caja de empotrar universal según norma UNE-EN-60.670:2006
- Montaje de fijación placa: Fijado a presión
- Posibilidad de realizar placas combinando interruptores, bases, reguladores,...

ACABADOS DISPONIBLES

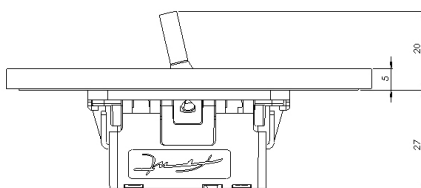
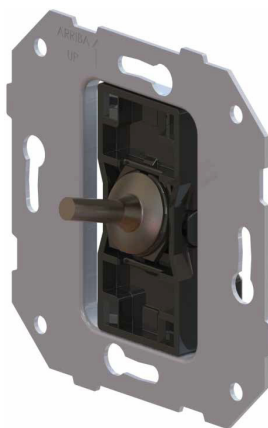
Negro
mateBlanco
mateOro
brillanteOro
cepilladoOro
viejo

Cromo

Níquel
cepilladoCobre
satinado
semimate

IC3040

Crossing



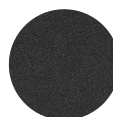
FEATURES

- Main part material: Polyamide 66 GF15 halogen free
- Lever material: Brass
- Plate material: Aluminum and brass
- Ambient operating temperature: -5 to 40 ° C
- Ambient storage temperature: -10 to 50 ° C
- Type of terminal connection: Screw terminal
- Cable section admitted: 1.5 to 4mm² rigid and flexible

TECHNICAL SPECIFICATIONS

- Rated voltage: 250 V ~
- Rated current: 16 AX
- Control mode: Lever
- Installation mode: Recessed
- Degree of protection: IP20
- Built according to standard UNE-EN 60.669-1: 2018
- Mounting in universal flush box according to standard UNE-EN-60.670: 2006
- Plate fixing assembly: Snap-on
- Possibility of making plates combining switches, bases, regulators, ...

FINISHES AVAILABLE



Matt black



Matt white



Polished gold



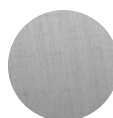
Brushed gold



Old gold



Chrome



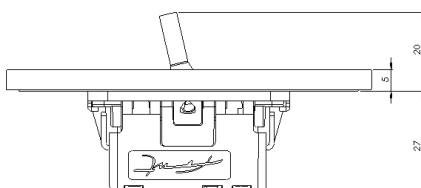
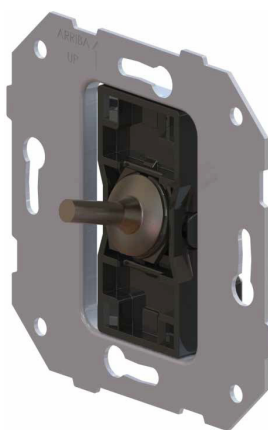
Brushed nickel



Semi-matt satin copper

IC3040

Incrocio



CARATTERISTICHE

- Materiale parte principale: poliammide 66 GF15 senza alogeni
- Materiale leva: ottone
- Materiale piastra: alluminio e ottone
- Temperatura ambiente di esercizio: Da -5 a 40 ° C
- Temperatura ambiente di conservazione: Da -10 a 50 ° C
- Tipo di connessione terminale: morsetto a vite
- Sezione cavo ammessa: da 1,5 a 4mm² rigido e flessibile

SPECIFICHE TECNICHE

- Tensione nominale: 250 V ~
- Corrente nominale: 16 AX
- Modalità di controllo: leva
- Modalità di installazione: incasso
- Grado di protezione: IP20
- Costruito secondo lo standard UNE-EN 60.669-1: 2018
- Montaggio in scatola da incasso universale secondo UNE-EN-60.670: 2006
- Gruppo fissaggio piastra: Press-fit
- Possibilità di combinare piatti interruttori, basi, regolatori, ...

FINITURA DISPONIBILI



Nero opaco



Bianco opaco



Oro lucido



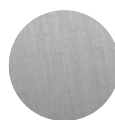
Oro spazzolato



Oro antico



Cromo



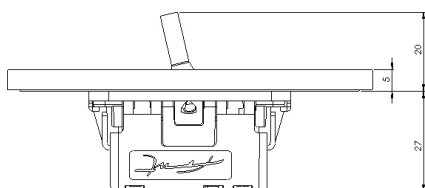
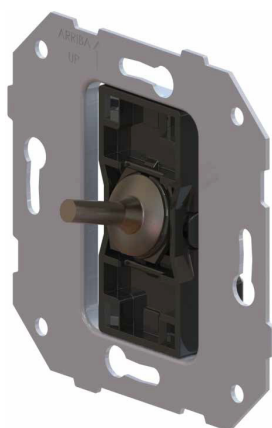
Nichel spazzolato



Rame satinato semiopaco

IC3040

Traversée



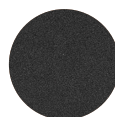
CHARACTÉRISTIQUES

- Matériau de la pièce principale: Polyamide 66 GF15 sans halogène
- Matériau du levier: laiton
- Matériau de la plaque: aluminium et laiton
- Température ambiante de fonctionnement: -5 à 40 ° C
- Température ambiante de stockage: -10 à 50 ° C
- Type de raccordement terminal: Borne à vis
- Section de câble admise: 1,5 à 4 mm² rigide et flexible

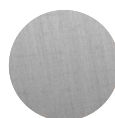
SPÉCIFICATIONS TECHNIQUES

- Tension nominale: 250 V ~
- Courant nominal: 16 AX
- Mode de contrôle: levier
- Mode d'installation: encastré
- Degré de protection: IP20
- Construit selon la norme UNE-EN 60.669-1:2018
- Montage dans un boîtier d'encastrement universel selon la norme UNE-EN-60.670: 2006
- Assemblage de fixation de plaque: encliquetable
- Possibilité de réaliser des assiettes combinant interrupteurs, bases, régulateurs, ...

FINITIONS DISPONIBLES

Noir
matBlanc
matOr
brillantOr
brosséOr
Vieilli

Chrome

Nickel
brosséCuivre
satiné
semi-mat