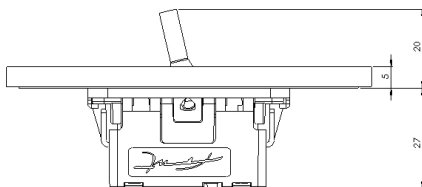
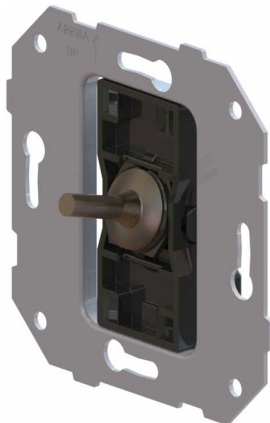
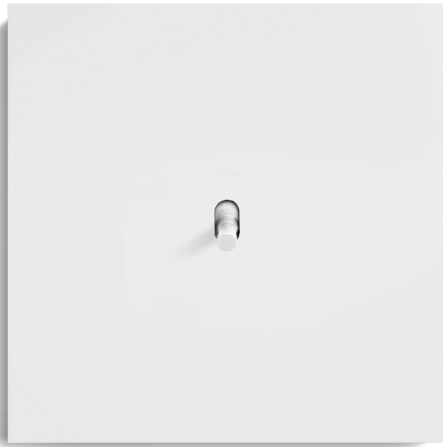


IC3120

Pulsador de palanca



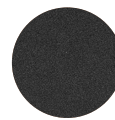
CARACTERÍSTICAS

- Material parte principal: Poliamida 66 GF15 libre de halógenos
- Material botón: Latón
- Material placa: Aluminio y latón
- Temperatura ambiente de funcionamiento: -5 a 40°C
- Temperatura ambiente de almacenamiento: -10 a 50°C
- Tipo de embornamiento: Borne con tornillo
- Sección de cable admitido: 1 a 4 mm² rígido y flexible

ESPECIFICACIONES TÉCNICAS

- Tensión asignada: 250 V ~
- Corriente asignada: 16 AX
- Modo de mando: Palanca
- Modo de instalación: Empotrado
- Grado de protección: IP20
- Construido según norma UNE-EN 60.669-1:2018
- Montaje en caja de empotrar universal según norma UNE-EN-60.670:2006.
- Montaje de fijación placa: Fijado a presión
- Posibilidad de realizar placas combinando interruptores, bases, reguladores,...

ACABADOS DISPONIBLES



Negro
mate



Blanco
mate



Oro
brillante



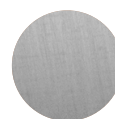
Oro
cepillado



Oro
viejo



Cromo



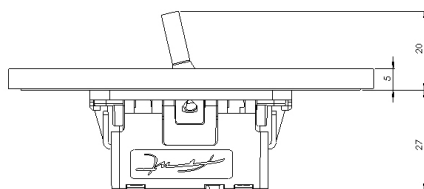
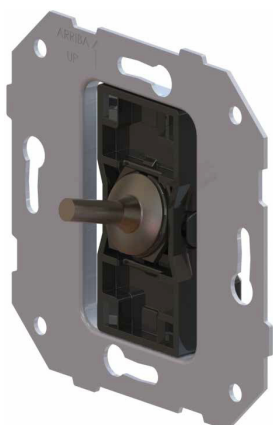
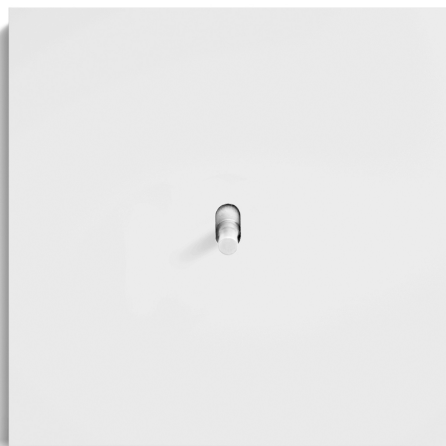
Níquel
cepillado



Cobre
satinado
semimate

IC3120

Lever push button



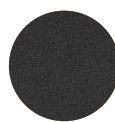
FEATURES

- Main part material: Polyamide 66 GF15. Free of halogens.
- Button material: Brass
- Plate material: Aluminum and brass
- Ambient operating temperature: -5 to 40 ° C
- Ambient storage temperature: -10 to 50 ° C
- Type of terminal connection: Screw terminal
- Cable section admitted: 1 to 4 mm² rigid and flexible

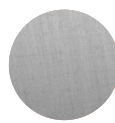
TECHNICAL SPECIFICATIONS

- Rated voltage: 250 V ~
- Rated current: 16 AX
- Command mode: Lever
- Installation mode: Recessed
- Degree of protection: IP20
- Built according to standard UNE-EN 60.669-1: 2018
- Mounting in universal flush box according to standard UNE-EN-60.670: 2006.
- Plate fixing assembly: Snap-on
- Possibility of making plates combining switches, bases, regulators, ...

FINISHES AVAILABLE

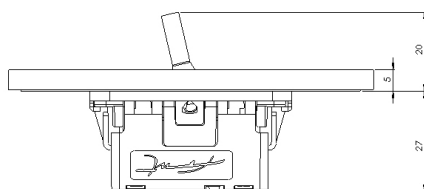
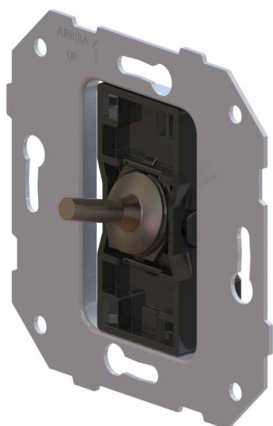
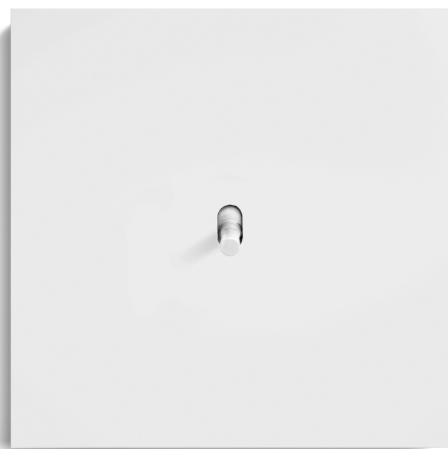
Matt
blackMatt
whitePolished
goldBrushed
goldOld
gold

Chrome

Brushed
nickelSemi-matt
satin
copper

IC3120

Pulsatore a levetta



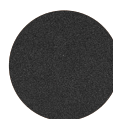
CARATTERISTICHE

- Materiale della parte principale: Poliammide 66 GF15 senza alogeni
- Materiale pulsante: ottone
- Materiale piastra: alluminio e ottone
- Temperatura ambiente di esercizio: Da -5 a 40 ° C
- Temperatura ambiente di immagazzinamento: Da -10 a 50 ° C
- Tipo di connessione terminale: morsetto a vite
- Sezione cavo ammessa: da 1 a 4 mm² rigido e flessibile

SPECIFICHE TECNICHE

- Tensione nominale: 250 V ~
- Corrente nominale: 16 AX
- Modalità di comando: Leva
- Modalità di installazione: Incasso
- Grado di protezione: IP20
- Costruito secondo lo standard UNE-EN 60.669-1: 2018
- Montaggio in scatola da incasso universale a norma UNE-EN-60.670: 2006.
- Gruppo fissaggio piastra: a scatto
- Possibilità di combinare piatti interruttori, basi, regolatori, ...

FINITURA DISPONIBILI



Nero opaco



Bianco opaco



Oro lucido



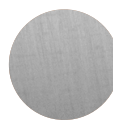
Oro spazzolato



Oro antico



Cromo



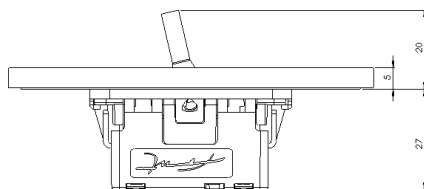
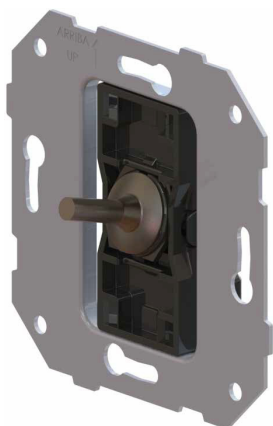
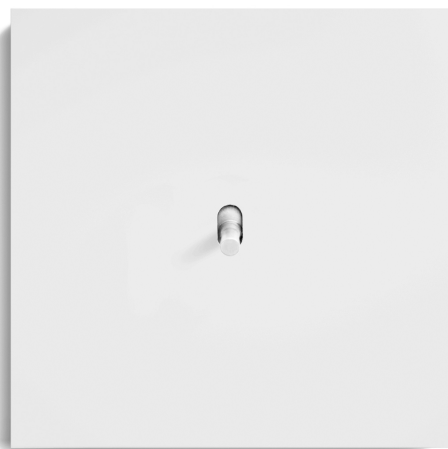
Nichel spazzolato



Rame satinato semiopaco

IC3120

Bouton poussoir à bascule



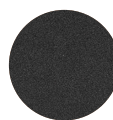
CHARACTÉRISTIQUES

- Matériau de la pièce principale: Polyamide 66 GF15 sans halogène
- Matériau du bouton: laiton
- Matériau de la plaque: aluminium et laiton
- Température ambiante de fonctionnement: -5 à 40 ° C
- Température ambiante de stockage: -10 à 50 ° C
- Type de raccordement terminal: Borne à vis
- Section de câble admise: 1 à 4 mm² rigide et souple

SPÉCIFICATIONS TECHNIQUES

- Tension nominale: 250 V ~
- Courant nominal: 16 AX
- Mode de commande: Levier
- Mode d'installation: Encastré
- Degré de protection: IP20
- Construit selon la norme UNE-EN 60.669-1: 2018
- Montage dans un boîtier d'encastrement universel selon la norme UNE-EN-60.670: 2006.
- Assemblage de fixation de plaque: encliquetable
- Possibilité de réaliser des assiettes combinant interrupteurs, bases, régulateurs, ...

FINITIONS DISPONIBLES



Noir
mat



Blanc
mat



Or
brillant



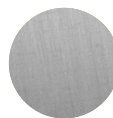
Or
brossé



Or
Vieilli



Chrome



Nickel
brossé



Cuivre
satiné
semi-mat