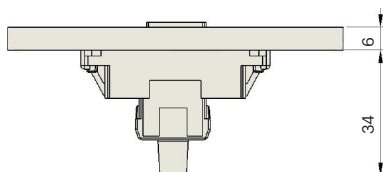
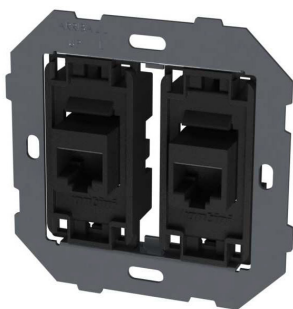


IC7060

Toma doble de teléfono



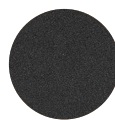
CARACTERÍSTICAS

- Material parte principal: Policarbonato
- Test de inflamabilidad : UL 94V-0
- Material contactos : Fósforo bronce
- Material placa: Aluminio y latón
- Temperatura ambiente de funcionamiento: 5 a 40°C
- Temperatura ambiente de almacenamiento: -10 a 50°C

ESPECIFICACIONES TÉCNICAS

- Fabricante: Commscope®
- Tipo jack : RJ12
- Categoría: 3
- Tipo conexión: USOC
- Versión: Individual
- Montaje en caja de empotrar universal según norma UNE-EN-60.670:2006
- Montaje de fijación placa: Fijado a presión
- Combinable con toma de datos RJ45 u otra toma RJ12

ACABADOS DISPONIBLES



Negro
mate



Blanco
mate



Oro
brillante



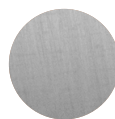
Oro
cepillado



Oro
viejo



Cromo



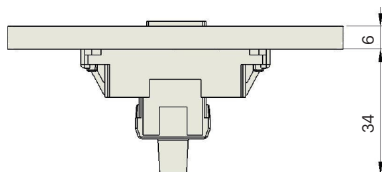
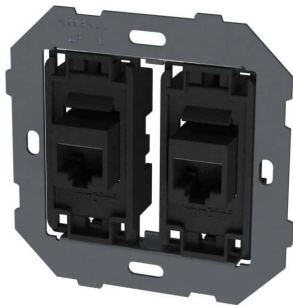
Níquel
cepillado



Cobre
satinado
semimate

IC7060

Double phone jack



FEATURES

- Main part material: Polycarbonate
- Flammability test: UL 94V-0
- Contact material: Phosphor bronze
- Plate material: Aluminum and brass
- Ambient operating temperature:
5 to 40 ° C
- Ambient storage temperature:
-10 to 50 ° C

TECHNICAL SPECIFICATIONS

- Manufacturer: Commscope®
- Jack type: RJ12
- Category: 3
- Connection type: USOC
- Version: Individual
- Universal flush box mounting
according to standard UNE-EN-60.670: 2006
- Plate fixing assembly: Press-fit
- Combinable with RJ45 or other RJ12 socket

FINISHES AVAILABLE



Matt
black



Matt
white



Polished
gold



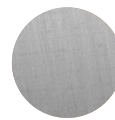
Brushed
gold



Old
gold



Chrome



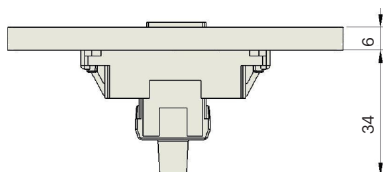
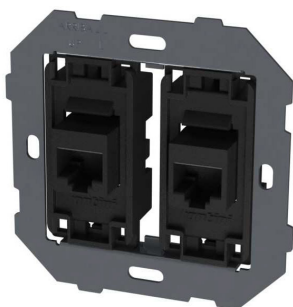
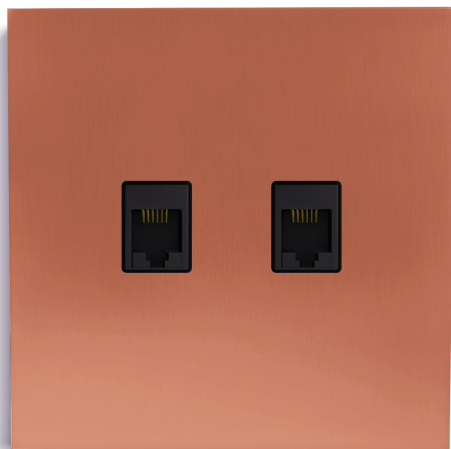
Brushed
nickel



Semi-matt
satin
copper

IC7060

Connettore doppio telefono



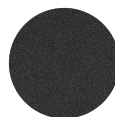
CARATTERISTICHE

- Materiale della parte principale: policarbonato
- Test di infiammabilità: UL 94V-0
- Materiale di contatto: bronzo fosforoso
- Materiale piastra: alluminio e ottone
- Temperatura ambiente di esercizio:
Da 5 a 40 ° C
- Temperatura ambiente di conservazione:
Da -10 a 50 ° C

SPECIFICHE TECNICHE

- Produttore: Commscope®
- Tipo di jack: RJ12
- Categoria: 3
- Tipo di connessione: USOC
- Versione: individuale
- Montaggio su scatola da incasso universale secondo lo standard UNE-EN-60.670: 2006
- Gruppo fissaggio piastra: Press-fit
- Combinabile con RJ45 o altra presa RJ12.

FINITURA DISPONIBILI



Nero
opaco



Bianco
opaco



Oro
lucido



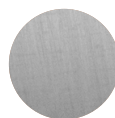
Oro
spazzolato



Oro
antico



Cromo



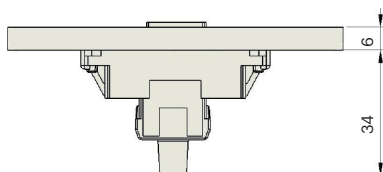
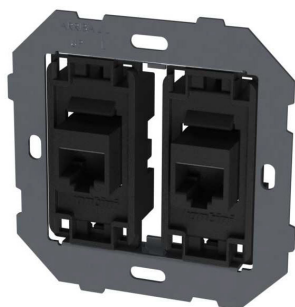
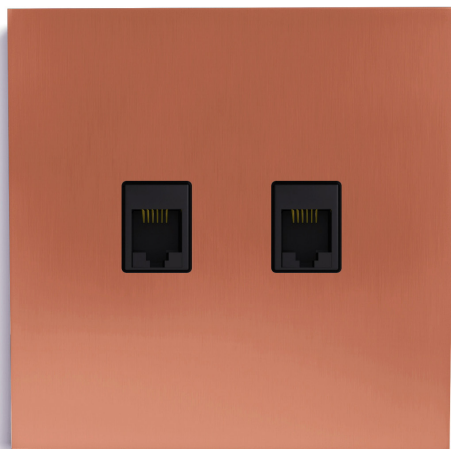
Nichel
spazzolato



Rame
satinato
semiopaco

IC7060

Double connecteur téléphonique



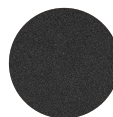
CHARACTÉRISTIQUES

- Matériau de la pièce principale: polycarbonate
- Test d'inflammabilité: UL 94V-0
- Matériau du contact: bronze phosphoreux
- Matériau de la plaque: aluminium et laiton
- Température ambiante de fonctionnement: 5 à 40 ° C
- Température ambiante de stockage: -10 à 50 ° C

SPÉCIFICATIONS TECHNIQUES

- Fabricant: Commscope®
- Type de prise: RJ12
- Catégorie: 3
- Type de connexion: USOC
- Version: individuelle
- Montage sur boîtier encastré universel selon la norme UNE-EN-60.670: 2006
- Groupe de fixation de plaque: Press-fit
- Peut être combiné avec RJ45 ou autre prise RJ12.

FINITIONS DISPONIBLES



Noir
mat



Blanc
mat



Or
brillant



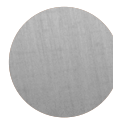
Or
brossé



Or
Vieilli



Chrome



Nickel
brossé



Cuivre
satiné
semi-mat