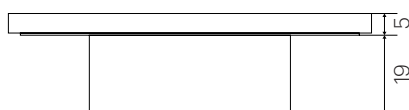
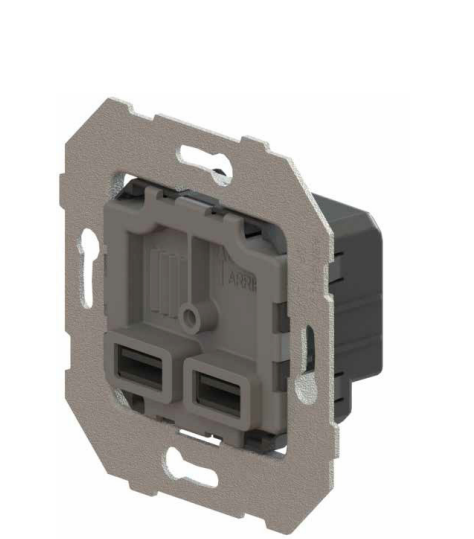


IC765000

Cargador doble USB



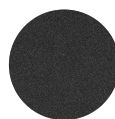
CARACTERÍSTICAS

- Frecuencia 50-60 Hz
- Tensión de salida: 5 V DC
- Intensidad de salida: 2,6A
- Versión: Dos tomas USB tipo A
- Modo de instalación: Empotrado
- Grado de protección: IP20
- Construido según la normativa UNE-EN 62368-1:2014 y UNE-EN 61.000-6-3:2007
- Montaje de fijación placa: Fijado a presión
- Posibilidad de realizar placas combinando interruptores, bases, reguladores, ...

ESPECIFICACIONES TÉCNICAS

- Material parte principal: Policarbonato
- Material placa: Aluminio y latón
- Temperatura ambiente de funcionamiento: 0 a 40°C
- Temperatura ambiente de almacenamiento: -5 a 50°C
- Tipo de embornamiento: Borne con tornillo
- Sección de cable admitido: 0,75 a 2,5mm² rígido y flexible

ACABADOS DISPONIBLES



Negro
mate



Blanco
mate



Oro
brillante



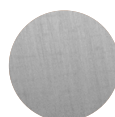
Oro
cepillado



Oro
viejo



Cromo



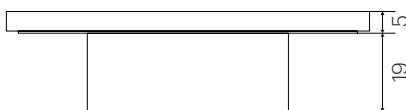
Níquel
cepillado



Cobre
brillante

IC765000

Dual USB charger



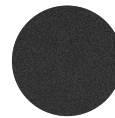
FEATURES

- Frequency 50-60 Hz
- Output voltage: 5 V DC
- Output current: 2.6A
- Version: Two USB type A sockets
- Installation mode: Recessed
- Degree of protection: IP20
- Built according to the UNE-EN 62368-1: 2014 and UNE-EN 61.000-6-3: 2007 regulations
- Plate fixing assembly: Press-fit
- Possibility of making plates combining switches, bases, regulators, ...

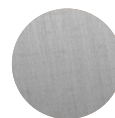
TECHNICAL SPECIFICATIONS

- Main part material: Polycarbonate
- Plate material: Aluminum and brass
- Ambient operating temperature: 0 to 40 ° C
- Ambient storage temperature: -5 to 50 ° C
- Type of terminal connection: Screw terminal
- Cable section admitted: 0.75 to 2.5mm² rigid and flexible.

FINISHES AVAILABLE

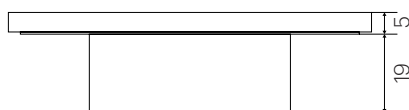
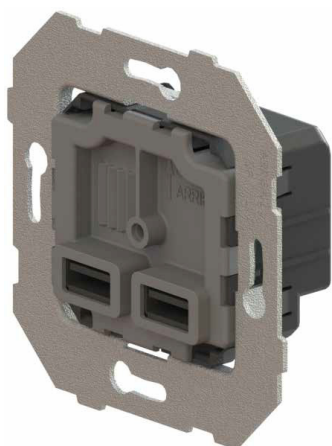
Matt
blackMatt
whitePolished
goldBrushed
goldOld
gold

Chrome

Brushed
nickelPolished
copper

IC765000

Doppio caricatore USB



CARATTERISTICHE

- Frequenza 50-60 Hz
- Tensione di uscita: 5 V DC
- Corrente di uscita: 2,6 A.
- Versione: due prese USB di tipo A.
- Modalità di installazione: incasso
- Grado di protezione: IP20
- Costruito secondo le normative UNE-EN 62368-1: 2014 e UNE-EN 61.000-6-3: 2007
- Gruppo fissaggio piastra: Press-fit
- Possibilità di combinare piatti interruttori, basi, regolatori, ...

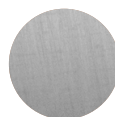
SPECIFICHE TECNICHE

- Materiale della parte principale: policarbonato
- Materiale piastra: alluminio e ottone
- Temperatura ambiente di esercizio: Da 0 a 40 ° C
- Temperatura ambiente di conservazione: Da -5 a 50 ° C
- Tipo di connessione terminale: morsetto a vite
- Sezione cavo ammessa: da 0,75 a 2,5mm² rigido e flessibile.

FINITURA DISPONIBILI

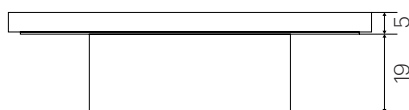
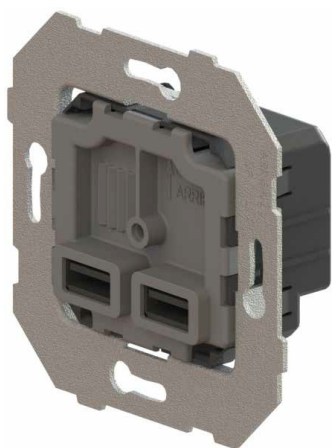
Nero
opacoBianco
opacoOro
lucidoOro
spazzolatoOro
antico

Cromo

Nichel
spazzolatoRame
lucido

IC765000

Double chargeur USB



CHARACTÉRISTIQUES

- Fréquence 50-60 Hz
- Tension de sortie: 5 V DC
- Courant de sortie: 2.6A
- Version: deux prises USB de type A
- Mode d'installation: encastré
- Degré de protection: IP20
- Construit selon les réglementations UNE-EN 62368-1: 2014 et UNE-EN 61.000-6-3: 2007
- Assemblage de fixation de plaque: Press-fit
- Possibilité de réaliser des assiettes combinant interrupteurs, bases, régulateurs, ...

SPÉCIFICATIONS TECHNIQUES

- Matériau de la pièce principale: polycarbonate
- Matériau de la plaque: aluminium et laiton
- Température ambiante de fonctionnement: 0 à 40 ° C
- Température ambiante de stockage: -5 à 50 ° C
- Type de raccordement terminal: Borne à vis
- Section de câble admise: 0,75 à 2,5 mm² rigide et souple

FINITIONS DISPONIBLES



Noir
mat



Blanc
mat



Or
brillant



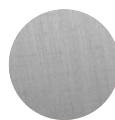
Or
brossé



Or
Vieilli



Chrome



Nickel
brossé



Cuivre
brillant