



## DESCRIPCIÓN

Lavabo rectangular sin rebosadero con base trasera para instalación de grifería.  
 Instalación mural\*, sobre encimera o encastrada.

Fabricado en Solid Surface.

- Válvula de desagüe no incluida.
- Modelo de válvula compatible: V64SS.

## CARACTERÍSTICAS

Dimensiones 600 x 400 x 120 mm  
 Volumen 0,70 m<sup>3</sup>  
 Peso 10,6 kg

\*Instalación realizada mediante escuadras a pared.

## ACABADOS DISPONIBLES

Color aplicable en el interior, el exterior o ambas superficies.



Blanco  
mate



Color  
RAL

## TEXTURAS DISPONIBLES

- Posibilidad de aplicar textura en los planos de las paredes exteriores en cualquier color de la carta RAL Classic.



Textura  
lisa



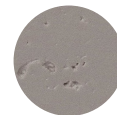
Textura  
micro pizarra



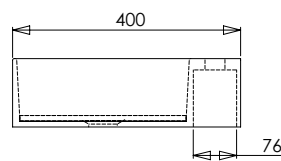
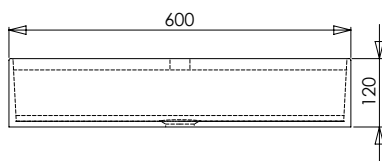
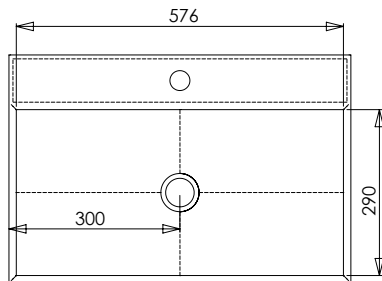
Textura  
pizarra



Textura  
pizarra lasca



Textura  
hormigón





## DESCRIPTION

Rectangular basin without overflow with rear base for installation of taps.

Wall-mounted\*, on-top or recessed installation.

Made of Solid Surface.

- Drain valve not included.
- Compatible valve model: V64SS.

## FEATURES

Dimensions 600 x 400 x 120 mm

Volume 0,70 m<sup>3</sup>

Weight 10,6 kg

\*Installation using wall brackets.

## AVAILABLE FINISHES

Colour applicable on the interior, exterior or both surfaces.



Matt  
white



RAL  
Colour

## AVAILABLE TEXTURES

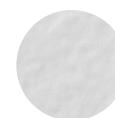
- Possibility of applying texture on the exterior wall surfaces in any colour from the RAL Classic colour chart.



Smooth  
texture



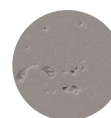
Micro slate  
texture



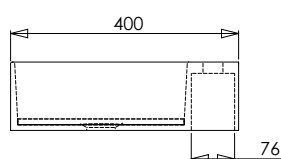
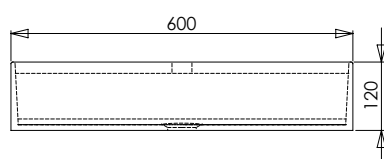
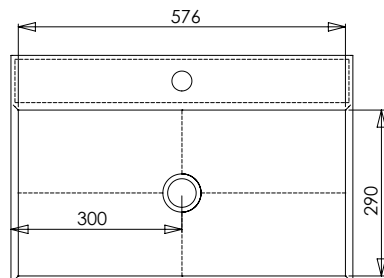
Slate  
texture



Slab slate  
texture



Concrete  
texture





## DESCRIPTION

Vasque rectangulaire sans trop-plein avec fond arrière pour l'installation de mitigeur.  
Installation murale\*, à poser ou encastrée.

Fabriquée en Solid Surface.

- Bonde de drainage non incluse.
- Modèle de bonde compatible: V64SS.

## CHARACTÉRISTIQUES

Dimensions	600 x 400 x 120 mm
Volume	0,70 m <sup>3</sup>
Poids	10,6 kg

\*Installation au moyen de supports muraux.

## FINITIONS DISPONIBLES

Couleur applicable pour les surfaces intérieures, extérieures ou les deux.



Blanc  
mat



Couleur  
RAL

## TEXTURES DISPONIBLES

- Possibilité d'appliquer une texture sur les surfaces des murs extérieurs dans n'importe quelle couleur du nuancier RAL Classic.



Texture  
lisse



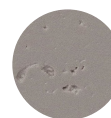
Texture  
micro ardoise



Texture  
de l'ardoise



Texture  
de l'ardoise  
lasca



Texture  
du béton

