

DESCRIPCIÓN

Mando termostático con embellecedor redondo. Esta parte externa es compatible con el cuerpo empotrado MT-UP.

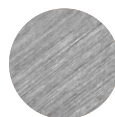
Fabricado en latón o acero inoxidable AISI 316.

DATOS TÉCNICOS

- Cierre de seguridad en: 38°
- Temperatura mínima de trabajo: 3°C
- Mínimo recomendado: 15°C
- Temperatura máxima de trabajo: 80°C
- Máximo Recomendado: 65°C
- Diferencial térmico recomendado: 50°C
- Sistema de seguridad con parada de flujo en caso de falta - de una de las dos aguas.
- Rango de presión min/max. 0,5 - 5 bar (en caso de que la presión del agua sea superior a 5 bar se recomienda instalar reductores de presión).
- Presión recomendada: 3 bar.

ACABADOS DISPONIBLES

Acero inoxidable AISI 316



Acero inox.
cepillado



Gunmetal



Cobre
cepillado

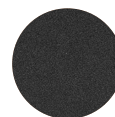


Oro
cepillado

Latón



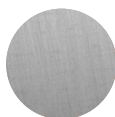
Blanco
mate



Negro
mate



Oro
brillante



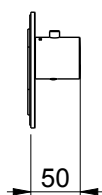
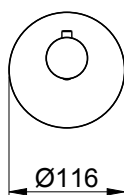
Níquel
cepillado



Cromo

MT-AP

Mixers



DESCRIPTION

Thermostatic control with round trim. This external part is compatible with the MT-UP built-in body.

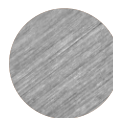
Made of brass or AISI 316 stainless steel.

TECHNICAL DATA

- Safety lock at: 38°
- Minimum working temperature: 3°C
- Recommended minimum: 15°C
- Maximum working temperature: 80°C
- Maximum Recommended: 65°C
- Recommended thermal differential: 50°C
- Safety system with flow stop in case of lack - of one of the two waters.
- Pressure range min / max. 0.5 - 5 bar (in case that the water pressure is higher than 5 bar it is recommended to install pressure reducers).
- Recommended pressure: 3 bar.

FINISHES AVAILABLE

Stainless steel AISI 316



Brushed stainless steel



Gunmetal



Brushed copper



Brushed gold

Brass



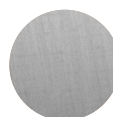
Matt white



Matt black



Polished gold



Brushed nickel



Chrome