

## DESCRIPCIÓN

Mezclador monomando con inversor de dos vías a pared.

Disposición horizontal.

Fabricado en latón.

## COMPONENTES

- O-DH2AP = Mezclador monomando, inversor de 2 vías y arandelas de Ø60 mm.
- O-DH2UP = Partes internas del conjunto.
- Cartucho cerámico Ø35 mm

## ACABADOS DISPONIBLES



Latón natural



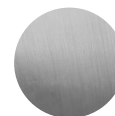
Cromo



Negro mate



Blanco mate



Níquel cepillado



Cobre cepillado



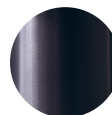
Cobre rosa cepillado



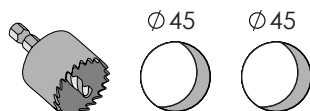
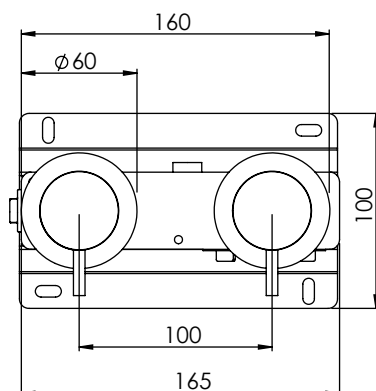
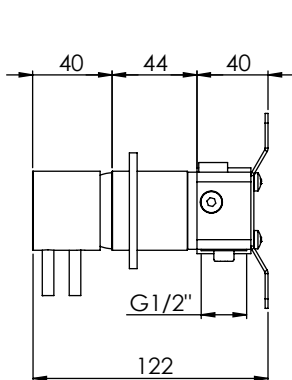
Oro brillante



Oro cepillado

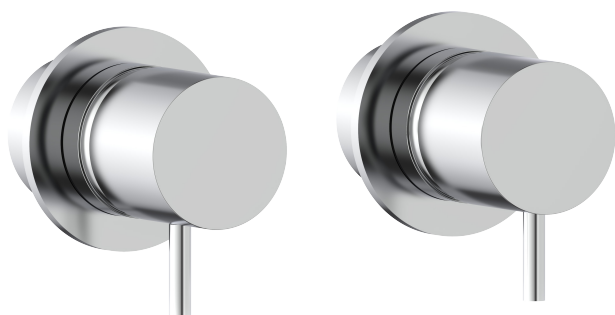


Gunmetal



# O-DH2

Mixers



## DESCRIPTION

Wall-mounted single mixer with two-way inverter.

Horizontal disposition.

Made of brass.

## COMPONENTS

- O-DH2AP = Single lever mixer, 2-way inverter and Ø60 mm flange.
- O-DH2UP = Internal parts of the assembly.
- Ø35 mm ceramic cartridge.

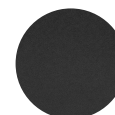
## AVAILABLE FINISHES



Natural  
brass



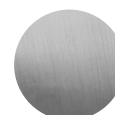
Chrome



Matt  
black



Matt  
white



Brushed  
nickel



Brushed  
copper



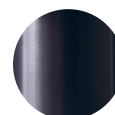
Brushed  
rose copper



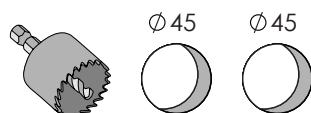
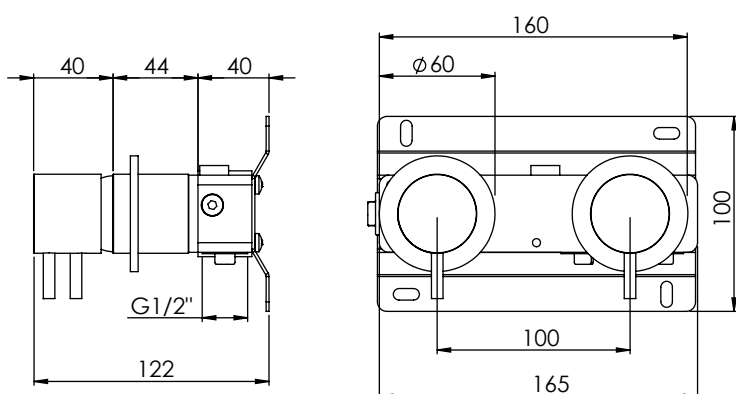
Polished  
gold



Brushed  
gold

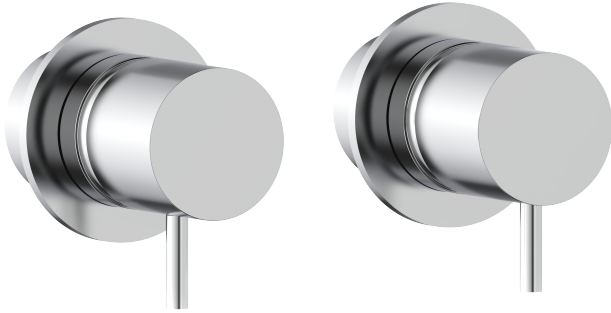


Gunmetal



# O-DH2

Mélangeurs



## DESCRIPTION

Mélangeur monocommande avec inverseur mural à deux voies.

Disposition horizontale.

Fabriqué en laiton.

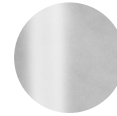
## COMPOSANTS

- O-DH2AP = Mitigeur monocommande, bec et rosaces Ø60 mm.
- O-DH2UP = Pièces internes de l'ensemble.
- Cartouche en céramique Ø35 mm.

## FINITIONS DISPONIBLES



Laiton naturel



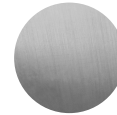
Chrome



Noir mat



Blanc mat



Nickel brossé



Cuivre brossé



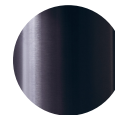
Cuivre rose brossé



Or brillant



Or brossé



Canon fusil

