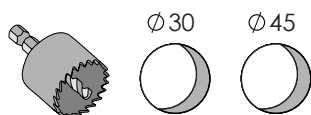
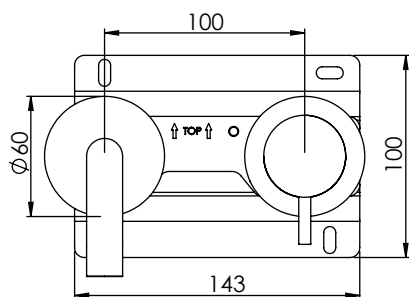
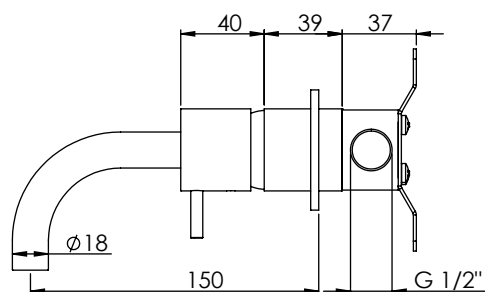


# O-LP21

Lavabo



## DESCRIPCIÓN

Grifo de lavabo con mezclador monomando modelo 1+ y caño de  $\varnothing 18 \times 150$  mm a pared. Disposición horizontal.

Fabricado en latón y acero inoxidable 316L.

## COMPONENTES

- O-LP21AP = Mezclador monomando, caño y arandelas de  $\varnothing 60$  mm.
- O-LP21UP = Partes internas del conjunto.
- Cartucho cerámico de  $\varnothing 35$  mm.

## CAUDAL

3.0 bar      5 L/m - caño

## CAUDAL CON REDUCTOR **BREEAM**

3.0 bar      3 L/m - caño

## ACABADOS DISPONIBLES

### Latón



Latón natural



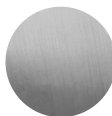
Cromo



Negro mate



Blanco mate



Níquel cepillado



Cobre cepillado



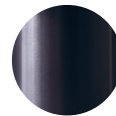
Cobre rosa cepillado



Oro brillante

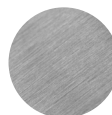


Oro cepillado



Gunmetal

### Acero inoxidable AISI 316L



Acero inox. cepillado

# O-LP21

Basin



## DESCRIPTION

Wall-mounted basin faucet with single lever mixer model 1+ and spout of Ø18x150 mm long. Horizontal disposition.

Made of brass and stainless steel 316L.

## COMPONENTS

- O-LP21AP = Single lever mixer, spout and Ø60 mm flanges.
- O-LP21UP = Internal parts of the assembly.
- Ø35 mm ceramic cartridge.

## FLOW RATE

3.0 bar      5 L/m - spout

## FLOW WITH REDUCER **BREEAM**

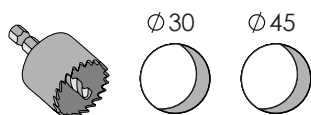
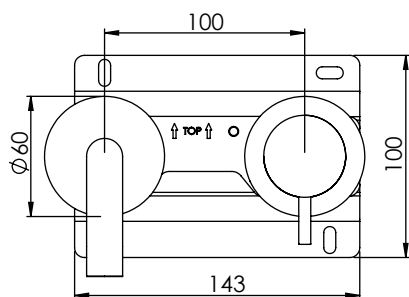
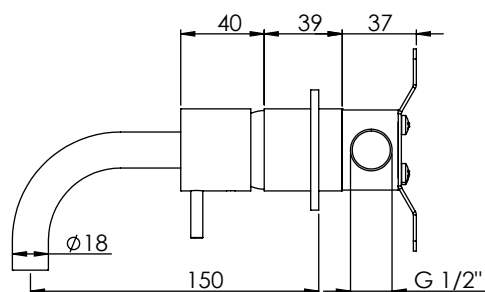
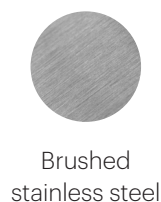
3.0 bar      3 L/m - spout

## AVAILABLE FINISHES

### Brass

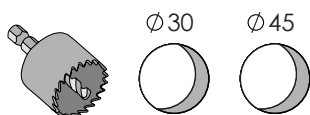
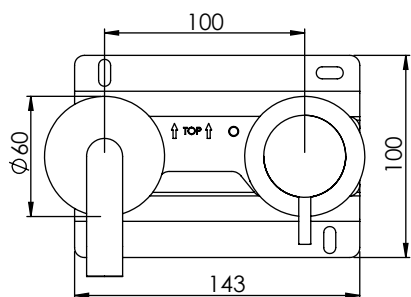
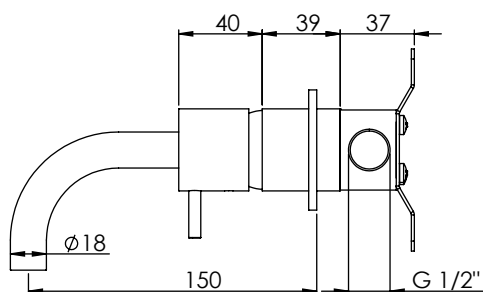


### Stainless steel AISI 316L



# O-LP21

Lave-mains



## DESCRIPTION

Mitigeur monocommande à encastrer pour vasque modèle 1+ avec bec, Ø18x150 mm. Disposition horizontale.

Fabriqué en laiton et acier inoxydable 316L.

## COMPOSANTS

- O-LP21AP = Mitigeur monocommande, bec et rondelles Ø60 mm.
- O-LP21UP = Pièces internes de l'ensemble.
- Cartouche céramique de Ø35 mm.

## DÉBITS

3.0 bar 5 L/m - bec

## DÉBIT AVEC RÉDUCTEUR **BREEAM®**

3.0 bar 3 L/m - bec

## FINITIONS DISPONIBLES

### Laiton



Laiton naturel



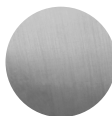
Chrome



Noir mat



Blanc mat



Nickel brossé



Cuivre brossé



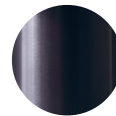
Cuivre rose brossé



Or brillant



Or brossé



Canon Fusil

### Acier inoxydable AISI 316L



Acier inox. brossé